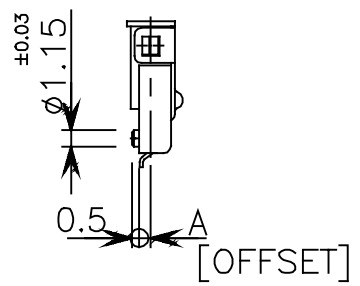
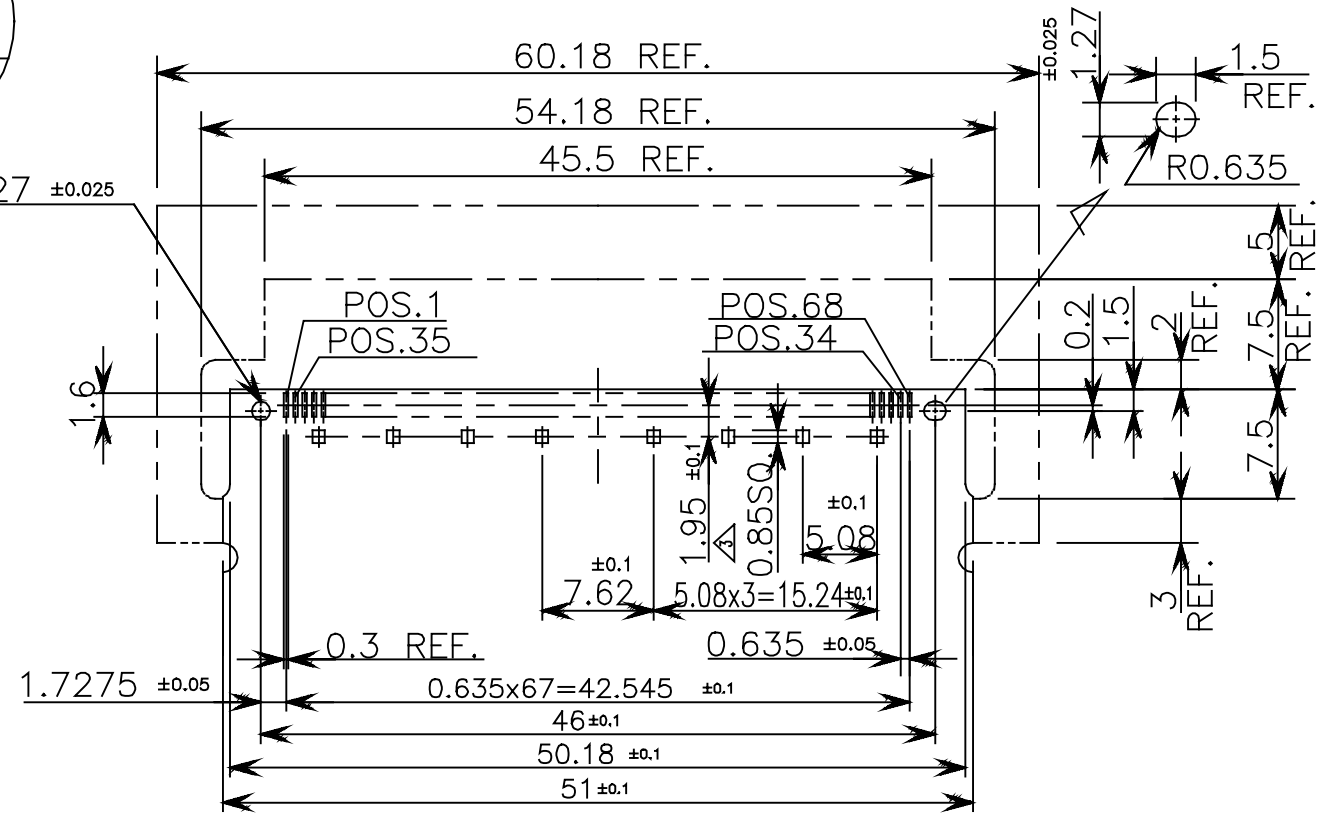
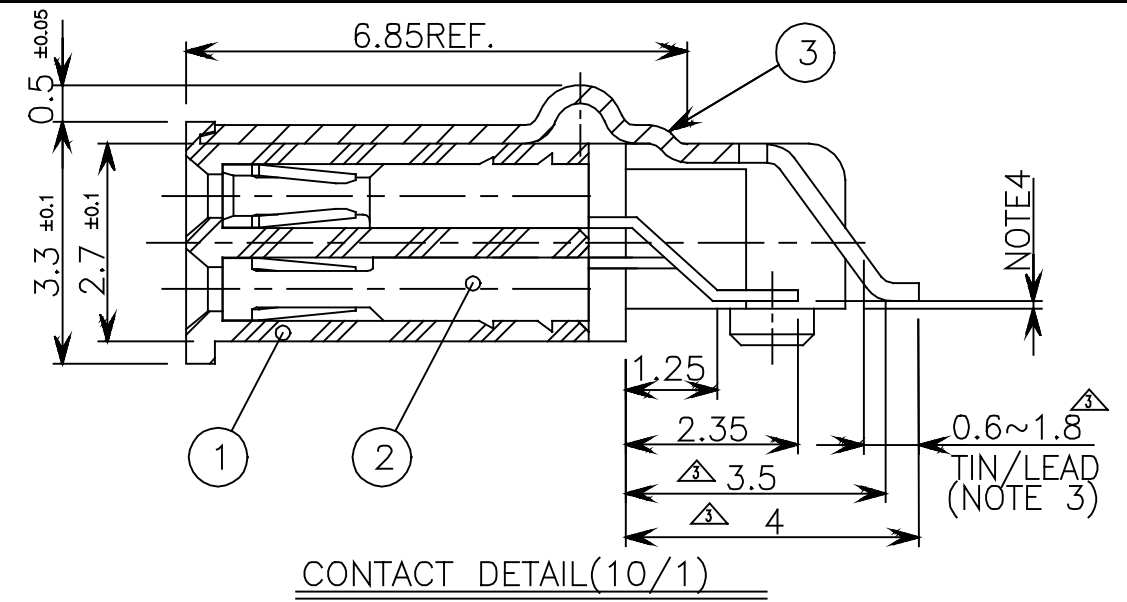


HONDA
PRINT RM
JUN.10.1997
ISSUED



- NOTE 1. CONNECTOR TO COMPLY WITH PCMCIA PC CARD STANDARD RELEASE '95
2. CONTACT PLATING
CONTACT AREA: Au 0.1μm MIN. OVER Pd 0.5μm MIN.
TERMINAL AREA: 9/1 TIN/LEAD 1.5μm MIN.
ALLOVER: Ni 1μm MIN.
3. SHIELD PLATE PLATING
SURFACE AREA: Au 0.1 μm
TERMINAL AREA: 9/1 TIN/LEAD 1.5μm
UNDERPLATING: Ni 1μm
4. TERMINAL LEAD COPLANARITY IS 0.1MAX.
5. DETACHABLE SHIELD PLATE TYPE.

ICMB-68FYGB-OM06	0.6
ICMB-68FYGB-OM03	0.3
ICMB-68FYGB-OM00	0
△ P/N	DIMENSION A



LTR.	DATE	BY	REV.	DESCRIPT	NO.	PART NAME	MATERIAL	QTY	FINISH	NOTE
△	MAR.13 1997	K.Y.		CORRECTED S.P.LATE FINISH						
△	MAR.11 1997	K.Y.		ADD NOTE ETC.						
△	MAR.10 1997	K.Y.		CHANGE PART NO.						
△	MAR.3 1997	K.Y.		CHANGE SHIELD PLATE SHAPE	3	SHIELD PLATE	PHOSPHOR BRONZE		REFER TO NOTE 3	REFER TO NOTE 5
△	FEB.27 1997	K.Y.		CHANGE SHIELD PLATE PLATING	2	CONTACT	PHOSPHOR BRONZE	68	REFER TO NOTE 2	
△	NOV.8 1996	K.Y.		CHANGE SHAPE, PART NO. AND P.C.B. ETC.	1	INSULATOR	LCP(GF)	1		UL94V-0 BLACK

DATE	SCALE	UNIT	3RD . A . P	HONDA TSUSHIN KOGYO., LTD.		
NOV.5 (1996)	2 / 1	mm(INCH)		DR.	DE.	CHK.
				CHK.	APP.	NAME
						68 POS. SOCKET CONNECTOR FOR CARD BUS PC CARD
						PART NO. ICMB-68FYGB-OM() △
						REV. 6F